

Attachment to Airworthiness Directive No. 1993-001/3

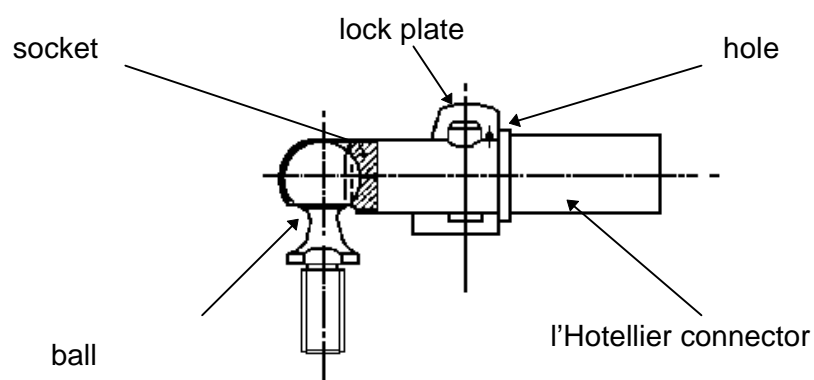
L'Hotellier ball and socket connector, lock plate

Attachment page 1 of 4

Section I

L'Hotellier ball and socket connectors with lock plate

If the connectors are not yet equipped with safety pins (e.g. l'H 140-31 made by Hotellier), these safety pins have to be retrofitted. In certain cases it may become necessary to rebores the hole in the lock plate, which is provided for visual inspection, to $\varnothing 1.2$ mm so that the safety pin can be inserted.



Warning!

Unsecured ball and socket connectors may open automatically in flight!

Attachment to Airworthiness Directive No. 1993-001/3 L'Hotellier ball and socket connector, lock plate

Attachment page 2 of 4

Section II

LBA-approved locking systems

The following systems to secure l'Hotellier ball and socket connectors are LBA-approved: Uerlings sleeves or Uerlings type sleeves (see section III), safety pin (figures 2 and 2a), LS-safety sleeve (figure 3), Schempp-Hirth spring (figure 4) und Wedekind locking system (figure 5).

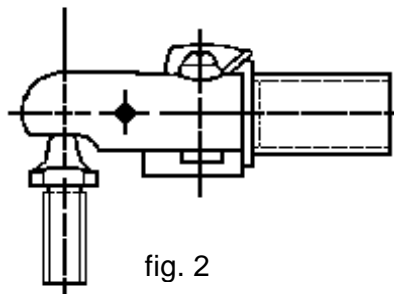


fig. 2

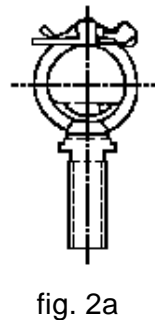


fig. 2a

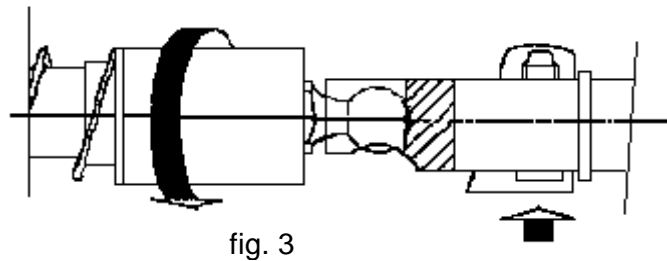


fig. 3

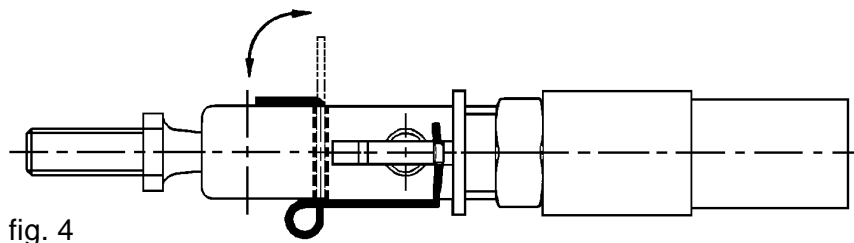


fig. 4

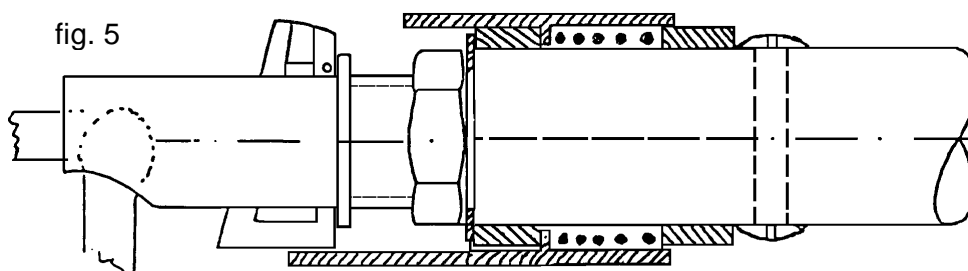


fig. 5

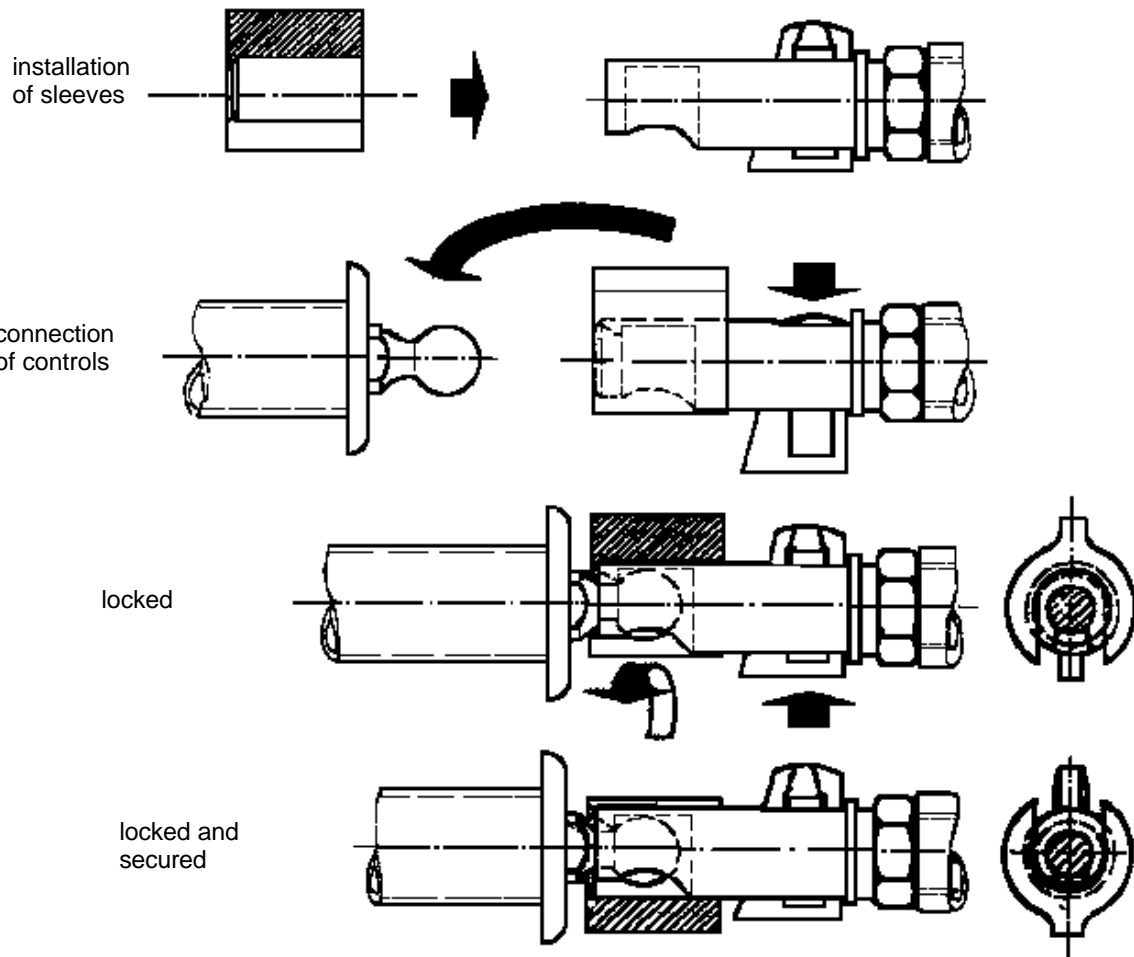
Attachment to Airworthiness Directive No. 1993-001/3
L'Hotellier ball and socket connector, lock plate
Attachment page 3 of 4

Section III

Installation instruction for Uerlings type sleeves

For installation, the sleeves have to be slid axially onto the l'Hotellier ball and socket connectors.

They may by no means be clipped radially onto the l'Hotellier ball and socket connector. Radial clipping (excessive opening of the sleeve) may lead to cracks or ruptures due to overstressing so that the sleeve cannot function properly any more.



Attachment to Airworthiness Directive No. 1993-001/3
L'Hotellier ball and socket connector, lock plate
Attachment page 4 of 4

Section IV

L'Hotellier ball and socket connectors

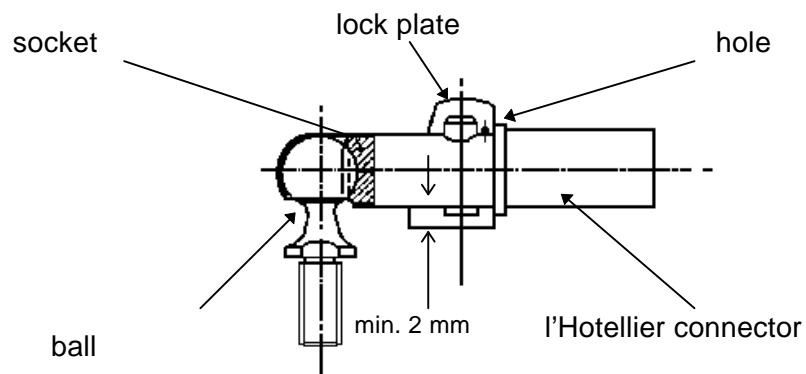
Prior to the installation of ball and socket connectors, everyone has to familiarize himself with their functioning.

The socket is to be slid completely over the ball with the lock plate pressed down. During locking the lock plate moves back slightly so that in a correct connection the hole on the narrow edge of the lock plate becomes visible.

The safety pin is to be inserted in this hole thus securing the ball and socket connector.

Attention:

By loading the connection full engagement of the ball is to be verified!



Warning!

Unsecured ball and socket connectors may open automatically in flight.